

CENTURYLINK

RECEIVED

2011 JUL 21 AM 10: 23

IDAHO PUBLIC
UTILITIES COMMISSION

July 15, 2011

Ms. Jean D. Jewell
Secretary
Idaho Public Utilities Commission
P.O. Box 83720
Boise, Idaho 83720-0074

CEN-t-11-03

Dear Ms. Jewell:

Enclosed is the application of CenturyTel of Idaho, Inc. for the broadband tax credit for year ending December 31, 2010. This application is being submitted for Commission determination that the broadband equipment installed for 2010 meets the definition of qualified broadband equipment as found in Idaho Code 63-3029I.

1. Name and address of the applicant:

CenturyTel of Idaho, Inc.
100 CenturyLink Drive
Monroe, LA 71203

Contact person:

Jon Robinson, Vice-President Tax
Email Jon.Robinson@CenturyLink.com
Phone: 318-330-6261

CenturyTel of Idaho, Inc. is a telecommunications carrier.

2. Identify the area or location where the equipment is installed in Idaho.

Please refer to Exhibit 1.

3. Type of broadband service offered to the public in Idaho.

Asymmetrical Digital Subscriber Line (ADSL)


4. Network transmission rate:

The transmission rate of DSL equipment installed in Idaho ranges from 1MBPS to a subscriber and 125 KBPS from a subscriber.

5. **Provide a specific list of the equipment types that the application is requesting the Commission to determine is “qualified broadband equipment” as defined in Idaho Code 63-3029I. Include brand, manufacturer, model numbers, and or, other distinguishing features of the installed equipment. Please refer to Exhibit 1.**
6. **Installation dates:** Please refer to Exhibit 1.
7. **Written description with basic schematic drawings of relevant broadband Network including a description of how the installed equipment is an “integral part” of the broadband network. Please refer to Exhibit 2.**
8. **Percentage and number of potential subscribers:**
2010 Idaho- 3,400 customers, or 93%; Non-Idaho: 0 customers or 0%.
9. **Certified statement from applicant:**
Please refer to Exhibit 3.

If you have any questions concerning this filing, please contact me at (318) 330-6261.

Sincerely,


Jon Robinson
Vice-President Tax

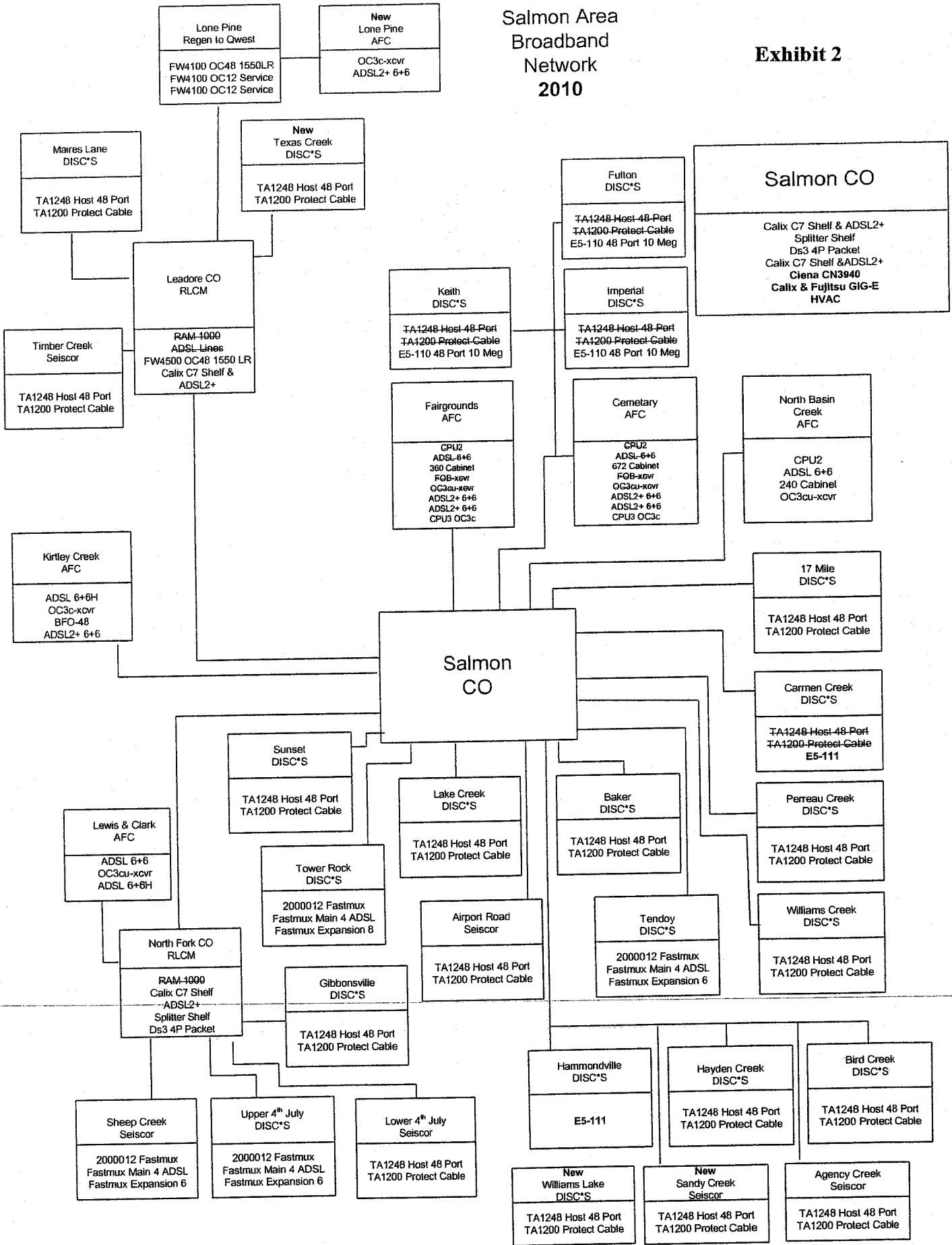
CenturyTel of Idaho, Inc.
 Qualified Broadband Equipment
 Deployed January 1-December 31, 2010

Exhibit No 1

Exchange	Location	Install Date	Part Number	Equipment Details	Cost	WO#
Salmon	Carmen Creek	10/29/2010	000-00189 000-00226	Calix E5-111 Calix E5-400	\$ 37,982.21	E.1918117C E.1918117C
Salmon	Salmon	11/19/2010	CSMN-CT9401	Ciena CN3940	12,500.29	E. 214348C
Salmon	Salmon	12/2/2010	FC9580GSL5	Fujitsu FW4500 GIG-E Calix GIG-E	11,529.64	E. 201652C E. 201652C
Salmon	Hammondville	11/10/2010	000-00189 000-00226	Calix E5-111 Calix E5-400	37,335.69	E. 221257C E. 221257C
Salmon	Salmon	4/15/2010		Cut-Loop Copper Cable	3,739.72	E. 197096C
Salmon	Salmon	6/3/2010		.3 Miles Copper Cable	8,493.15	E. 125524C
Total Qualified Broadband Expenditures for Jan 1 - Dec 31, 2010					\$ 111,580.70	
Broadband Tax Credit Rate					0.03	
Total Broadband Tax Credit for Jan 1 - Dec 31, 2010					\$ 3,347.42	


Salmon Area Broadband Network 2010

Exhibit 2



Idaho Broadband Certification
Exhibit 3

I hereby certify that representatives of CenturyTel of Idaho, Inc. (the applicant) have read the application statutes for broadband investment income tax credit and the applicant believes that the subject broadband equipment qualifies for the tax credit under Idaho Code 63-3029I.



Jon Robinson
Vice-President Tax